



# MAXRIG

YOUR SUCCESS IS OUR BUSINESS

14421 Chrisman Rd. Houston, TX 77039

TEL:713-858-1237, FAX: 281-931-1128

[WWW.MAXRIGUSA.COM](http://WWW.MAXRIGUSA.COM)

## OUR COMMITMENT

Customer Satisfaction

Highest Quality

First Class Service

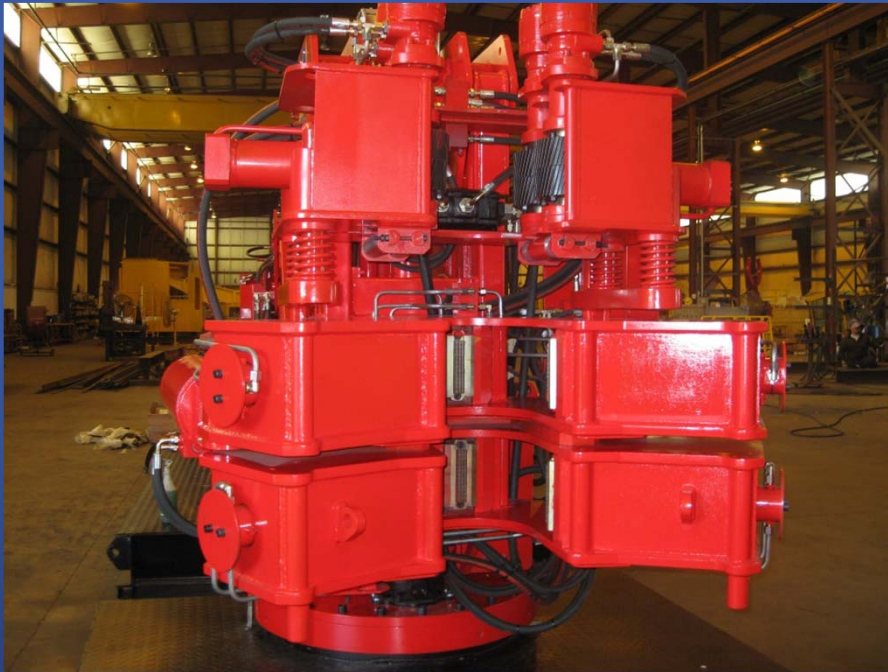
Constant Innovation



# MAX120

## AUTOMATIC ROUGHNECK

ISSUED PATENT NO:  
US 8,534,386 B2; US 8,667, 869 B2



### SPECIAL FEATURES

- \* Makeup 100,000 ft-lbs
- \* Breakout 120,000 ft-lbs
- \* Connections 2 7/8" DP – 9 3/4" DC
- \* Floating Spinner to Accommodate Misalignment of Drill String
- \* Universal Triple Jaws Clamping for Better Gripping to Prevent Jaw Slipping
- \* Quick and Easy Spinner Field Change Without Removing Any Hose, Shaft, or Motor
- \* Siemens PLC Touch Screen Control With Hydraulic Manual Override
- \* Patent Pending Positioning Arms
- \* Easy Access for Field Service
- \* Readily Available Spare Parts for Quick Service and Maintenance
- \* Small Footprint for Rig Installation
- \* ABS Approved Design
- \* Wt: 12000 lbs

## MAXRIG

MAXRIG USA LLC  
14421 Chrisman Rd. Houston, TX 77039  
TEL: 713-858-1237, FAX: 281-693-4420  
WWW.MAXRIGUSA.COM





## SPECIFICATIONS

### Standard Package

- Makeup 100,000 ft-lbs
- Breakout 120,000 ft-lbs
- Connections 3" DP – 10" DC
- Spinner Torque 3,000 ft-lbs for 5" Drill Pipe
- Spinner Speed 100 RPM for 5" DP
- Vertical Travel 30"
- Extended Well Center Reach 150" (standard)
- Universal Triple Jaws Clamping
- Automatic Mouse Hole Rotation
- Plug and Play Floor Socket
- Integrated Spinner & Centralizer
- Quick and Easy Spinner Field Change Without Removing Any Hose, Shaft, or Motor
- Built-in Manual Control Console
- Articulated Positioning Arm
- Automatic Mouse Hole Rotation
- Explosion Proof Handheld Wireless Remote Control
- Siemens PLC Touch Screen Control

### Options:

- Remote PLC Diagnostic System
- Explosion Proof HPU@3000 psi WP, 100HP/80GPM

### ISSUED PATENT NO.

US 8,534,386 B2; US 8,667, 869 B2

# MAXRIG

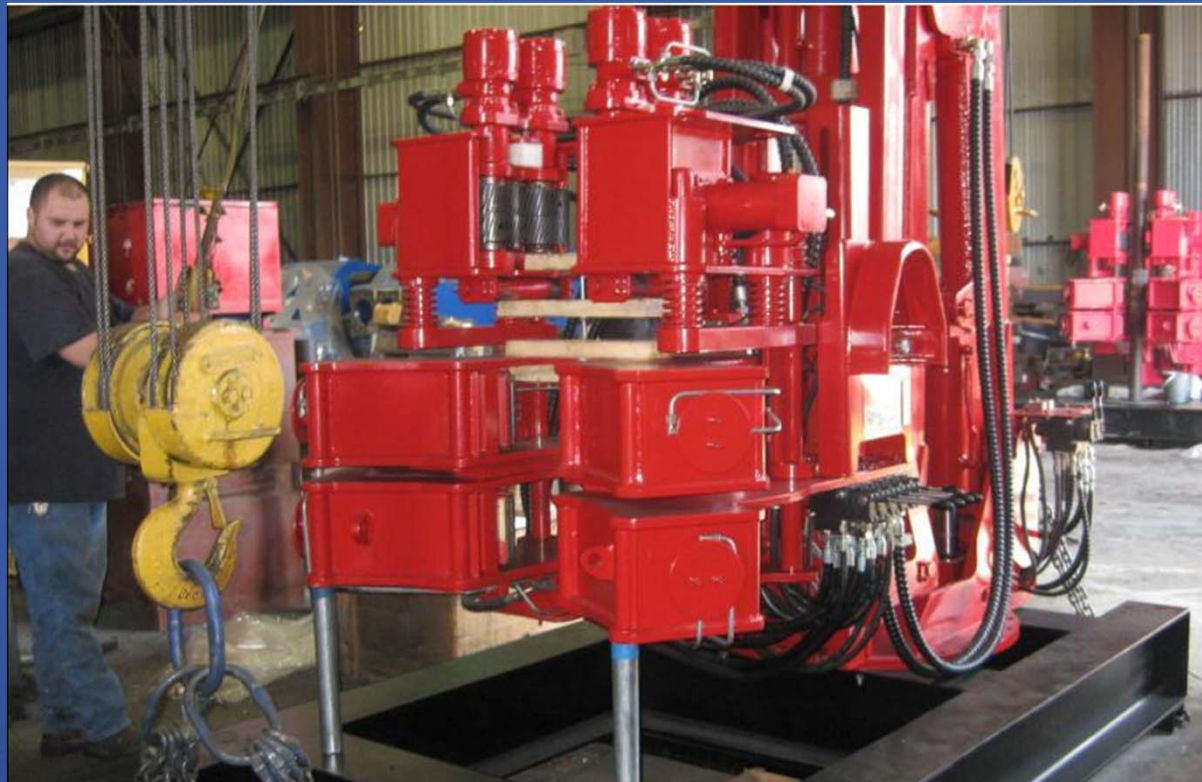


MAXRIG USA LLC  
14421 Chrisman Rd. Houston, TX 77039  
TEL: 713-858-1237, FAX: 281-693-4420  
WWW.MAXRIGUSA.COM

# MAX80

ISSUED PATENT NO:  
US 8,534,386 B2; US 8,667, 869 B2

## AUTOMATIC ROUGHNECK



### MAXRIG

MAXRIG USA LLC  
14421 Chrisman Rd. Houston, TX 77039  
TEL: 713-858-1237, FAX: 281-693-4420  
[WWW.MAXRIGUSA.COM](http://WWW.MAXRIGUSA.COM)

ISSUED PATENT NO:  
US 8,534,386 B2; US 8,667, 869 B2

## SPECIFICATIONS

### Standard Package

- Makeup 60,000 ft-lbs
- Breakout 80,000 ft-lbs
- Connections 4" DP – 8 1/2" DC
- Spinner Torque 2500 ft-lbs for 5" Drill Pipe
- Spinner Speed 100 RPM for 5" DP
- Vertical Travel 30"-
- Well Center Reach 110" (standard)
- Automatic Mouse Hole Rotation
- Plug and Play Floor Socket for fast moving
- Universal Triple Jaws Clamping
- Integrated Spinner & Centralizer (patent pending)
- Quick and Easy Spinner Field Change without Removing Any Hose, Shaft, or Motor
- Built-in Manual Control Console
- Patented Articulated Positioning Arm
- Automatic Mouse Hole Rotation
- Explosion Proof Handheld Wireless Remote Control
- Siemens PLC Touch Screen Control
- Wt: 8000 lbs



### Options:

- Extended Well Center Reach
- Remote PLC Diagnostic System
- Explosion Proof HPU@3000 psi WP, 75 HP, 40GPM

# MAXRIG



MAXRIG USA LLC  
14421 Chrisman Rd. Houston, TX 77039  
TEL: 713-858-1237, FAX: 281-693-4420  
WWW.MAXRIGUSA.COM

# CSA30

## Casing Stabbing Arm

(Patent # 7,971,917 B2)



VERTICAL POSITION  
(STORAGE)

### SPECIAL FEATURES

- Casing Size 2 3/8" – 30"
- Universal 4 Roller Contact
- Self Adjusting Contact
- Automatic Positioning
- Built-in Anti Collision
- Siemens PLC Remote Controls
- Quick Rig Installation
- Minimum Field Service
- 6 -10 GPM @ 2000 psi
- 24V DC Power Supply
- Class 1, Div 2 or Class 1, Div 1



**MAXRIG**

MAXRIG USA LLC  
14421 Chrisman Rd. Houston, TX 77039  
TEL: 713-858-1237, FAX: 281-693-4420  
WWW.MAXRIGUSA.COM

# HPU-75



## 75 HP Hydraulic Power Unit

### SPECIFICATION

- \* 75 HP, 40 GPM, 3000 psi WP
- \* 316 Stainless Steel Reservoir
- \* Class 1, Div 1, Zone 1, 2
- \* Variable Displacement Pressure Compensated Pump
- \* Dim: 60" x 45" x 70"
- \* Wt: 2500 lbs

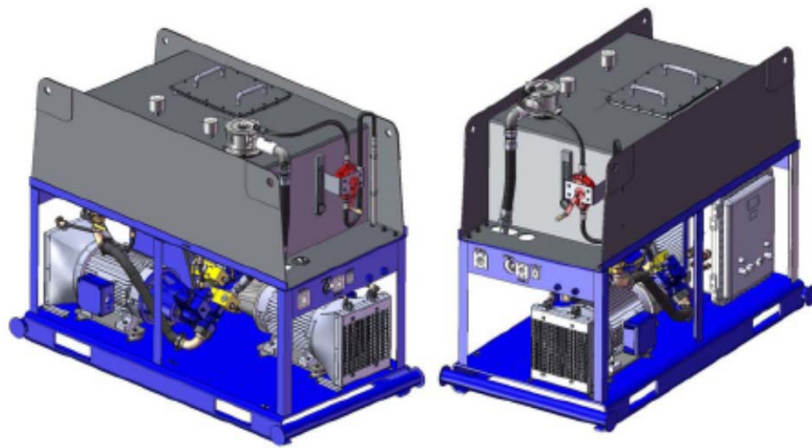
**MAXRIG**



MAXRIG USA LLC  
14421 Chrisman Rd. Houston, TX 77039  
TEL: 713-858-1237, FAX: 281-693-4420  
WWW.MAXRIGUSA.COM

# HPU-80/100

**HPU-D80/D100**  
**Dual Motor 40/50 Hp**  
**HYDRAULIC POWER UNIT**



## SPECIFICATION

- 100 HP, 80 GPM, 3000 psi WP
- 200 Gallon Stainless Steel Reservoir
- Class 1, Div 1, Zone 1, 2
- Variable Displacement Pressure Compensated Pump
- Two integrated air/oil heat exchangers
- One explosion proof starter with two motor starters with overloads
- Two control transformers with local start/stop
- Dim: 92"L x 46"W x 80"H
- Wt: 5000 lbs

**MAXRIG**



MAXRIG USA LLC  
14421 Chrisman Rd. Houston, TX 77039  
TEL: 713-858-1237, FAX: 281-693-4420  
WWW.MAXRIGUSA.COM



# MUD BUCKET

## SPECIFICATION



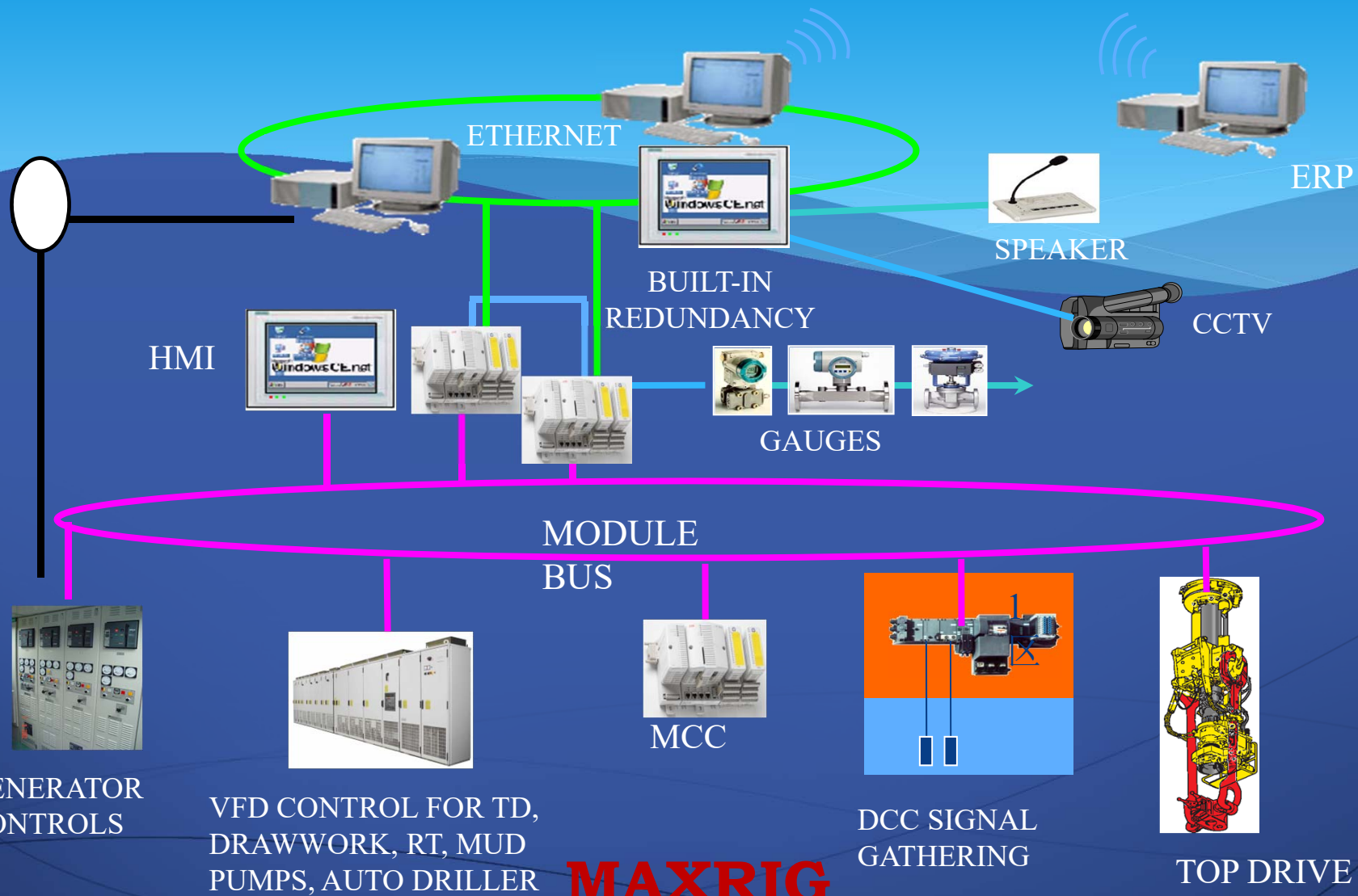
- \* DP Range: 2 7/8 – 6 5/8"
- \* Drain Hose: 6"
- \* Cycle Time: 1-2 sec bucket close, 5-6 sec arm reach out
- \* PLC Automatic Control (option)
- \* Dims: 100" x 23" x 80"
- \* Wt: 2500 lbs
- \* HPU REQ 10 GPM, 2000 psi



**MAXRIG**

MAXRIG USA LLC  
14421 Chrisman Rd. Houston, TX 77039  
TEL: 713-858-1237, FAX: 281-693-4420  
WWW.MAXRIGUSA.COM

# COMPLETE RIG CONTROL SYSTEMS



## MAXRIG

MAXRIG USA LLC  
14421 Chrisman Rd. Houston, TX 77039  
TEL: 713-858-1237, FAX: 281-693-4420  
WWW.MAXRIGUSA.COM

